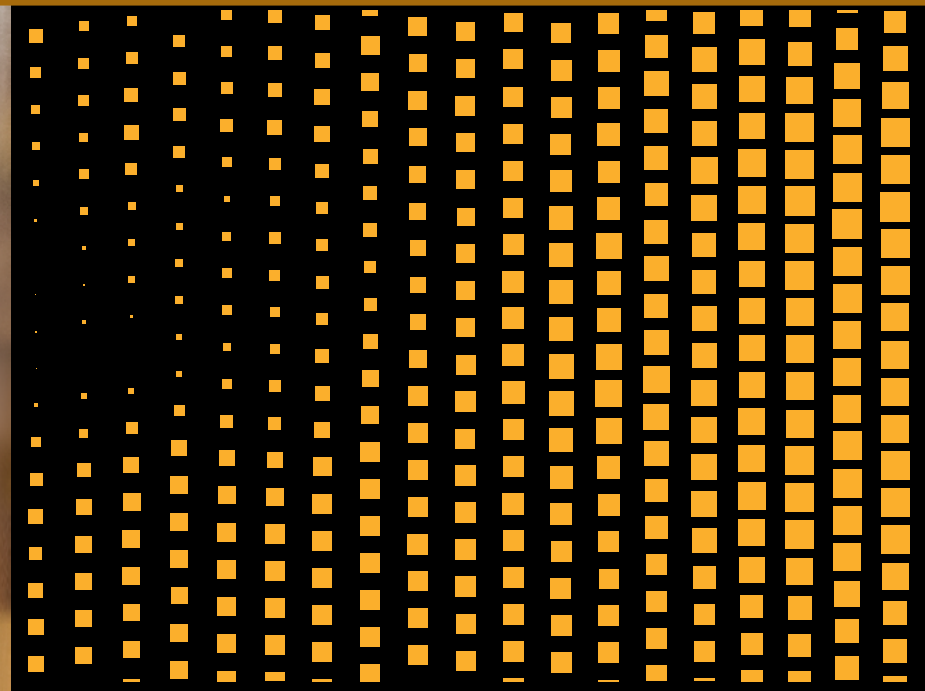


 **7" TOUCHLESS**  
*HALL LANDING*

Replace conventional mechanical buttons with our fully digital solution!





## Replace conventional mechanical buttons

Finally you can do away with the old fashioned mechanical buttons with our new 7" Touch display.

Allows for a complete new sleek touchless and digital experience for your buildings conventional hall landing Lift call buttons.

With built in audio feedback accessibility feature and brail overlay to comply to AS 1735.12 standards.





## Resilient against harsh chemicals

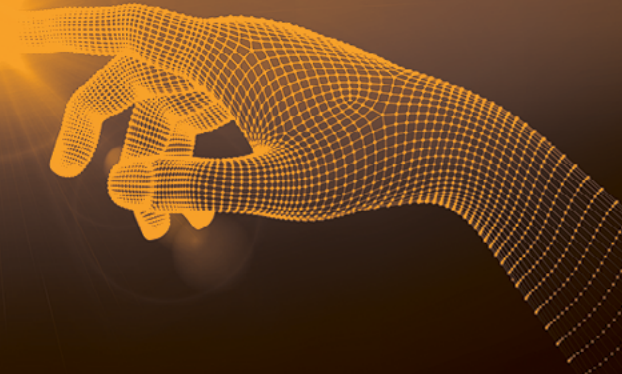
Our Touch screen is easy to clean, and includes an industrial polycarbonate lens which is resilient to harsh chemicals and cleaning agents, making the lift space more viable in a post covid landscape.



## Touchless Technology

With our proven resilient touchless technology, buttons can activate without physically touching the screen. Registering a call to the lift when the user simply hovers their finger near the button allowing for a clean and hygienic solution.

The touch technology is designed to respond even with a gloved touch, i.e. surgical or firemans gloves ensuring the continued use even during an emergency.





Do not use lifts  
if there is a fire



Do not use lifts  
if there is a fire



Do not use lifts  
if there is a fire



Do not use lifts  
if there is a fire



## Customisable Design

The 7" touch display is also completely customisable.

The graphical layout can be changed to suit any landing space from realistic conventional mechanical buttons to modern day touch panels.

© 2022 Pixel Technologies Pty Ltd

Supplier No. E5405

Proudly Designed & Manufactured in  
Australia for the world

Pixel Technologies assumes no  
responsibility for any errors that may  
appear in this publication.

All images are for illustration purposes only.  
Specifications are subject to change without  
prior notice. All information stated in the  
brochure is correct at time of printing and  
subject to change without notice.

+61 3 8843 0700

[www.pixeltechnologies.com.au](http://www.pixeltechnologies.com.au)

[info@pixeltechnologies.com.au](mailto:info@pixeltechnologies.com.au)

Melbourne | Sydney

Bisbane | Singapore

NZ/Pacific

